

Elektor

We make air work.



PRODUCT REVIEW

LOW PRESSURE BLOWERS	ND
MEDIUM PRESSURE BLOWERS	RD
HIGH PRESSURE BLOWERS	HRD
SIDE CHANNEL BLOWERS	SD
CONVEYING BLOWERS	FD/RD F



TECHNICAL INFORMATION

Conversion table

Units of measurement

	from unit of measurement	with conversion factor	in units of measurement	from units of measurement	with conversion factor	into units of measurement
Pressure	bar	1000	mbar	mbar	0,001	bar
Pressure	mbar	100	Pa	Pa	0,01	mbar
Pressure	mmWS	0,098	mbar	mbar	10,2	mm H ₂ O
Pressure	mWS	98,07	mbar	mbar	0,0102	mm H ₂ O

European units of measurement in the USA

	from SI-unit of measurement	with conversion factor	into anglo-amer. unit of measur.	from anglo-amer. unit of measur.	with conversion factor	into SI-units of measurement
Pressure	mbar	0,0145	psi = lb/in ²	psi = lb/in ²	68,95	mbar
Pressure	bar	14,5	psi = lb/in ²	psi = lb/in ²	0,0689	bar
Pressure	mbar	0,402	inches water	inches water	2,49	mbar
Volumetric flow rate	m ³ /min	264,2	gal/min	gal/min	0,00379	m ³ /min
Volumetric flow rate	m ³ /min	35,31	cfm	cfm	0,0283	m ³ /min
Electrical Power output	kW	1,341	hp	hp	0,746	kW
Length	mm	0,0394	inch	inch	25,4	mm
Length	m	39,37	inch	inch	0,0254	m
Length	mm	0,00328	ft	ft	305	mm
Length	m	3,28	ft	ft	0,305	m
Weight	kg	2,205	lb	lb	0,454	kg

Example for conversion

Pressure	180 mbar	0,0145	2,61 PSI	2,61 PSI	68,95	180 mbar
Volumetric flow rate	6 m ³ /min	35,31	211,8 ft ³ /min	211,8 ft ³ /min	0,0283	6 m ³ /min

LOW PRESSURE BLOWERS

ND



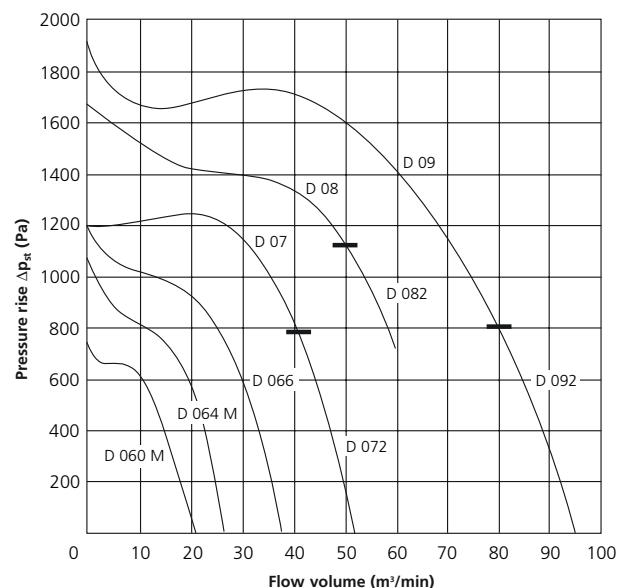
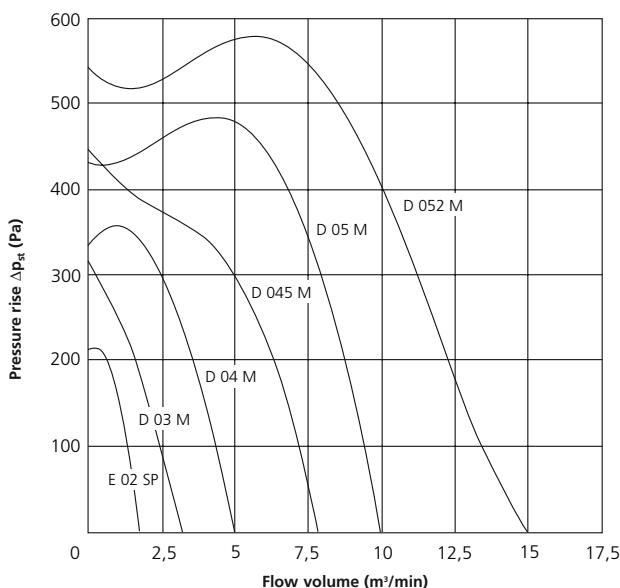
Applications:

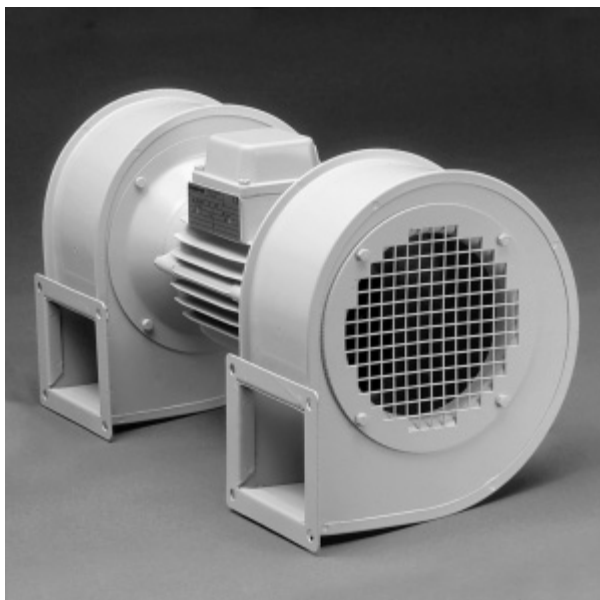
- Conveying of high air volumes at low and medium system resistance
- Extracting fumes and vapours
- Cooling apparatus and machinery parts
- Ventilation of rooms
- Chimney draft boosting
- Forced air supply for gas, oil and coal fired systems
- Drying parts of various size and composition
- Supplementary cooling of electric machines

For more details see ND catalogue.

ND range

Cast aluminium blower housings, impellers made of galvanised steel sheet, maintenance-free squirrel cage rotor motors to IP 54. The blowers can be supplied in clockwise or anti-clockwise rotation. On demand speed variable execution, 2-step speed variable, stepless with single phase, or speed variable execution by frequency converter. A variety of accessories include fine filters, connectors and throttle valves, base plate, etc. Special designs for specific applications, e. g. for higher media flow and ambient temperatures, with improved corrosion protection, with sealed housing parts, for special voltage and frequency as well as to enclosure IP 55 and thermal class F





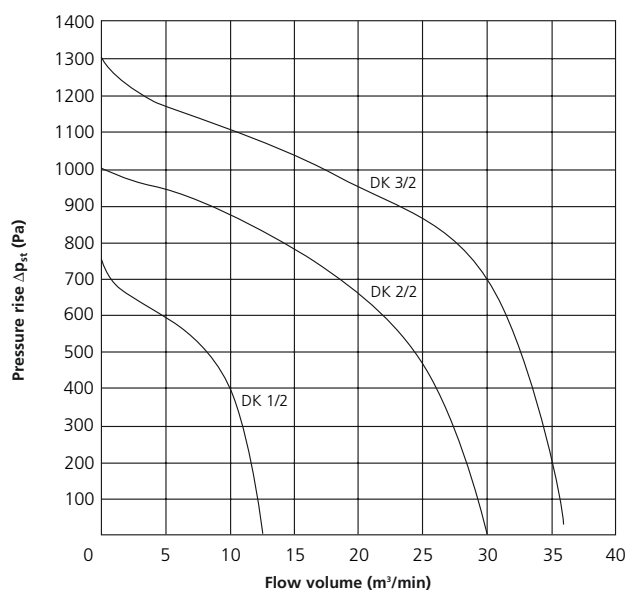
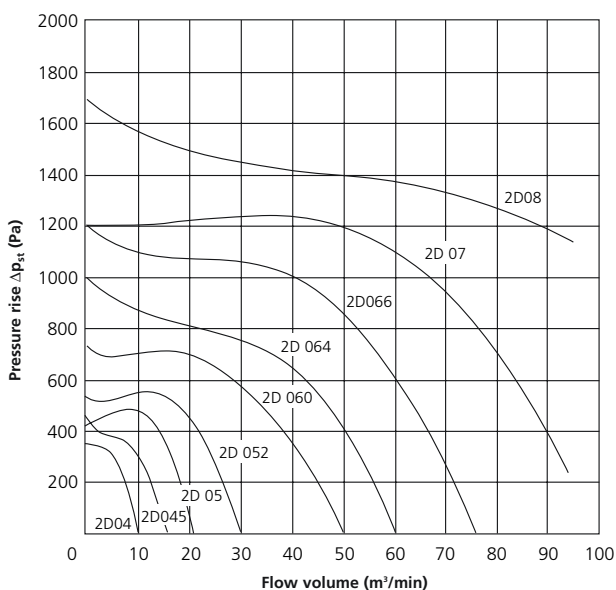
Twin blowers

Same basic technical design and accessories as the standard blowers. All units are supplied without the foot base.



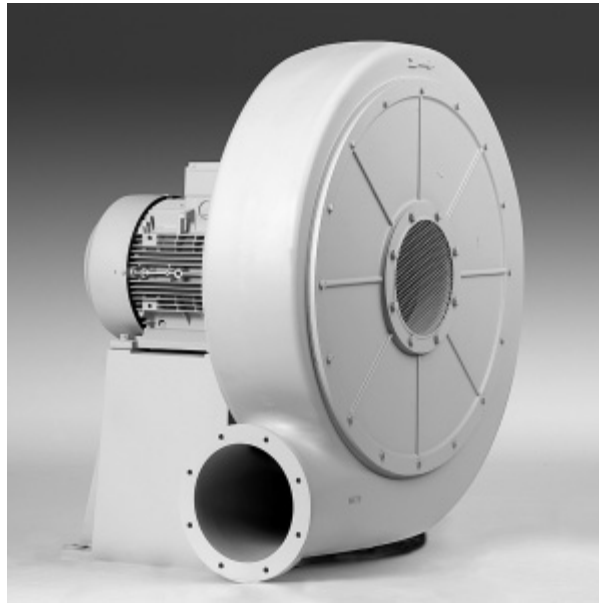
Compact blowers

Cast aluminium blower housings, impellers made of galvanised steel sheet. Compact dimensions by built-in motors, cooled by the air flow through the blower. The units are supplied without a foot base and for clockwise rotation only (seen from the inlet side). Fine filters are available as an accessory.



MEDIUM PRESSURE BLOWERS

RD



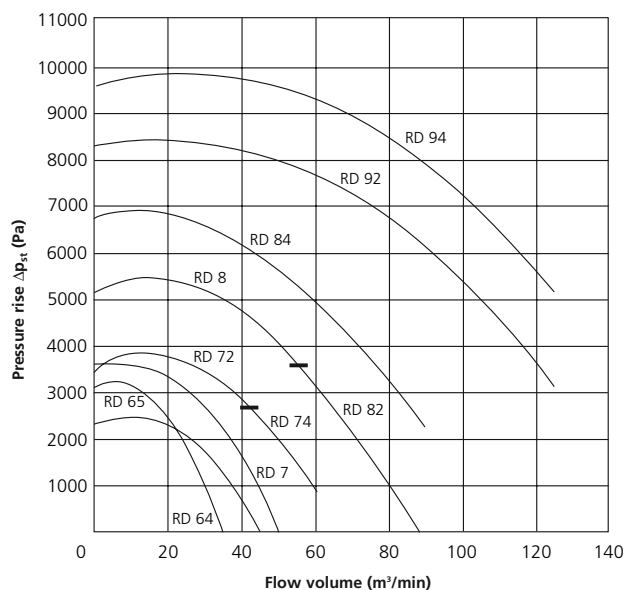
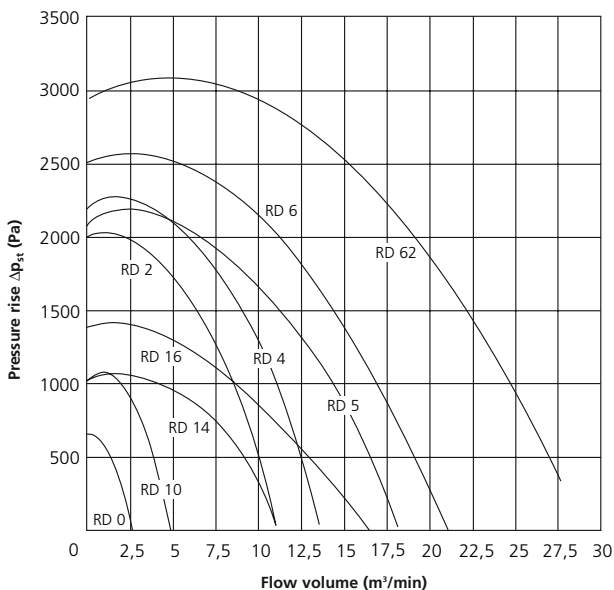
RD range

Cast aluminium blower housings, impellers made of galvanised steel sheet, maintenance-free squirrel cage rotor motor to IP 54. The blowers can be supplied in clockwise or anti-clockwise rotation, with or without foot base. On demand speed variable execution, 2-step speed variable, stepless with single phase, or speed variable execution by frequency converter. A variety of accessories include fine filters, connectors and throttle valves, etc. Special blowers for specific applications, e.g. for higher media flow and ambient temperatures, with improved corrosion protection, with sealed housing parts, for special voltage and frequency as well as to enclosure IP 55 and thermal class F.

Applications:

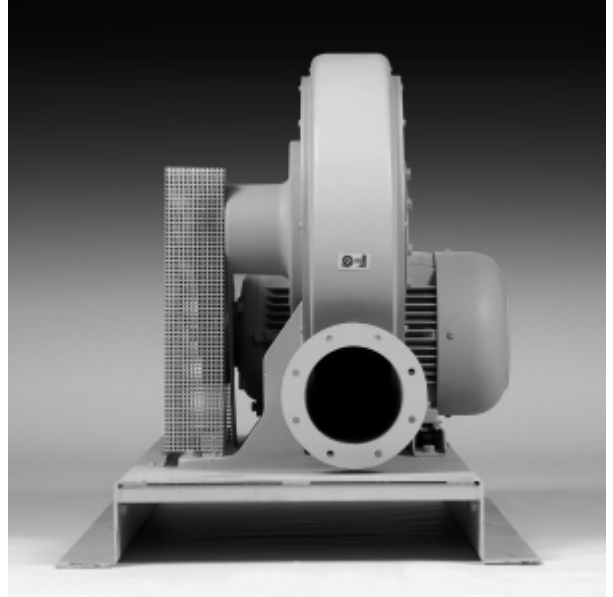
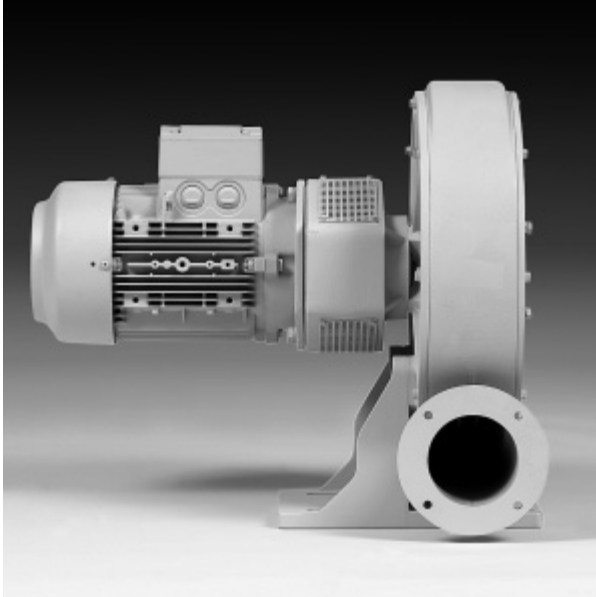
- Conveying of medium air volumes at higher system resistance
- Ventilation of installations with higher system resistance
- Air supply for drying installations
- Air supply for air cushion tables
- Air supply for filters and dust extraction

For more details see RD catalogue.



HRD

HIGH PRESSURE BLOWERS

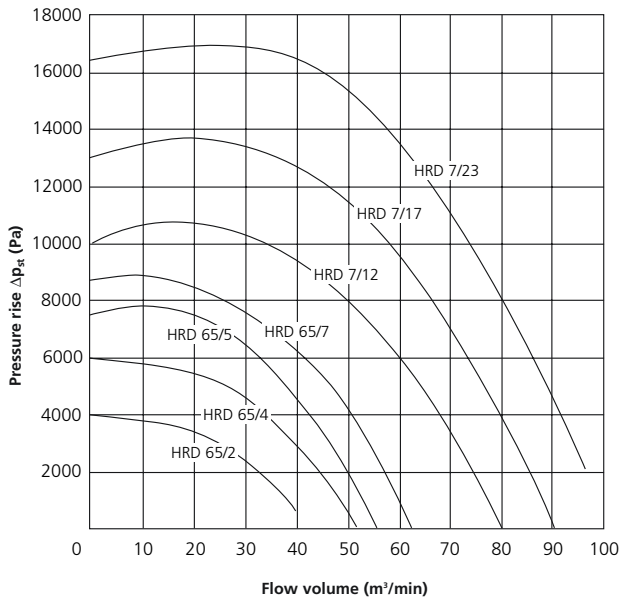
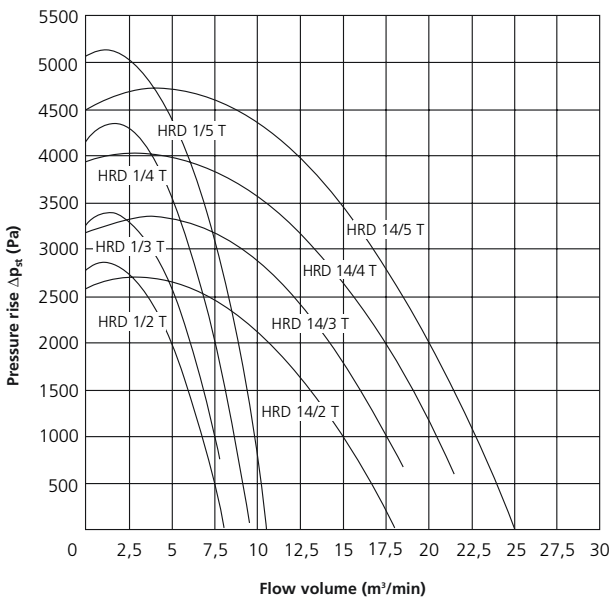
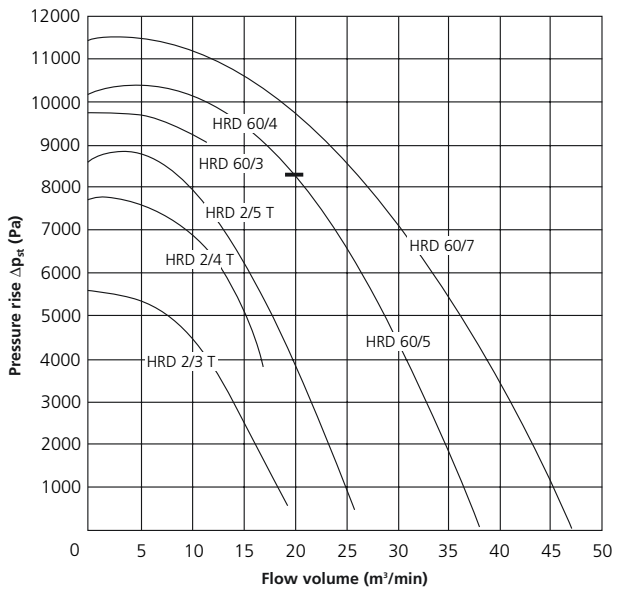


HRD range

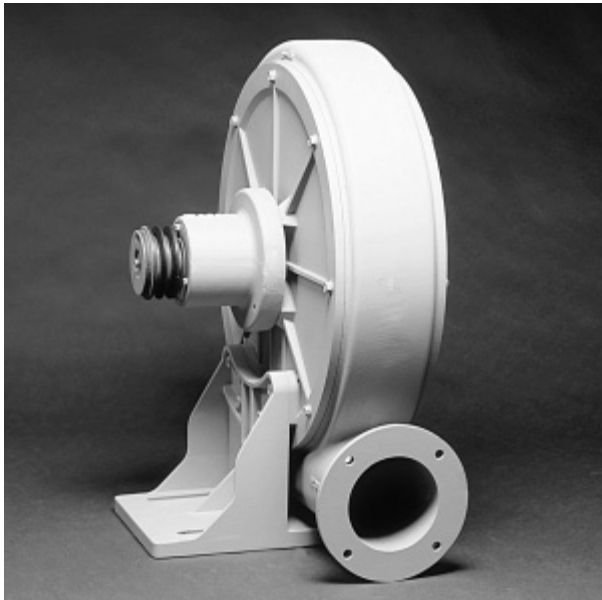
Cast aluminium blower housings, closed impellers made of sheet aluminium, maintenance-free squirrel cage rotor motors to IP 54. The blowers can be supplied in clockwise or anti-clockwise rotation. High performance by V-belt pulley drive at compact design. Special blowers for specific applications, e. g. for higher media flow and ambient temperatures, with improved corrosion protection, with sealed housing parts, for special voltage and frequency as well as to enclosure IP 55 and thermal class F.

Applications:

- Conveying of medium air volumes at higher system resistance
 - Vacuum operation
 - Forced air supply for gas, oil and coal fired systems
 - Air supply for drying installations
 - Air supply for air cushion tables
- For more details see HRD catalogue

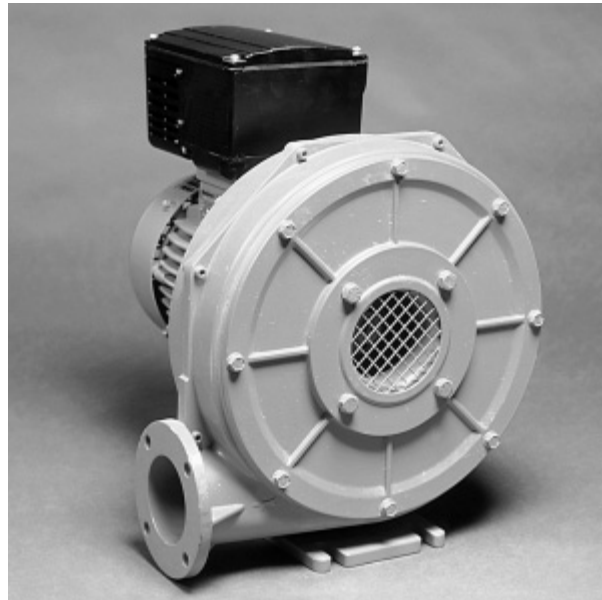


HIGH PRESSURE BLOWERS



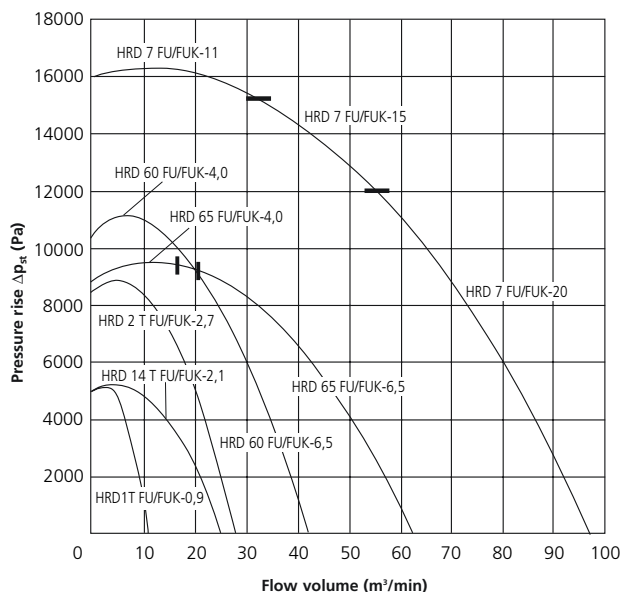
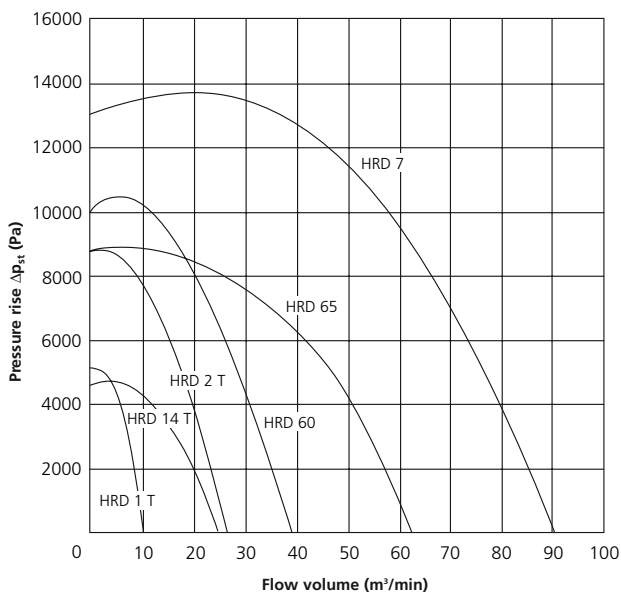
Model range without motor

This type of high-pressure fan can be driven from an external source via V-belts. The fan housings made of sturdy cast aluminium and the enclosed impellers are manufactured from aluminium sheet. Fans are available with a clockwise or anti-clockwise rotation. A variety of accessories is also available. Special fans for special operating conditions. e.g. increased temperatures of the conveyed medium and ambient temperatures, extended corrosion protection, fan sealing.



Model range for frequency converter

FU/FUK series devices allow the infinitely variable speed regulation of the induction motors used. The speed can be set from 0 to the max. possible speed typical for the device. No derating is required in the entire speed range. In the case of devices in the FUK series, the frequency converter is connected to the motor. The enclosure is IP54. The max. ambient temperature can range up to 60 degrees Celsius. Devices in the FU series require a separate frequency converter, which is normally accommodated in a switch cabinet. The types 1 T FUK-105/0,9 to HRD 65 FUK-100/7,5 are deliverable with build up frequency converter.





ELECTROR ORIGINAL ACCESSORIES

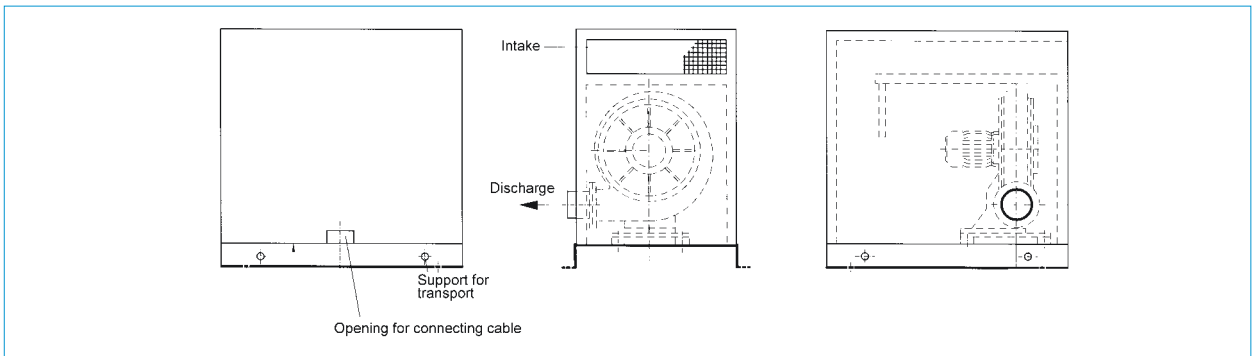
High performance noise protection systems.

Due to design, all the fans from Elektror have a low noise level in proportion to their output. Extra noise protection measures may be required in individual cases, however, depending on the purpose or also on statutory regulations. For these cases, Elektror offers a number of possibilities for active noise protection.

Noise insulating covers

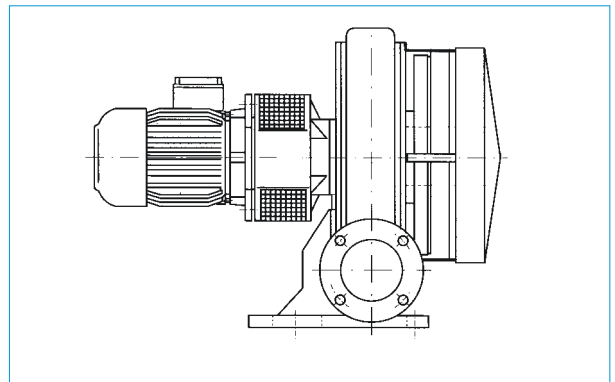
These covers are manufactured from sheet steel and covered with a rock wool insulation material, thereby providing effective noise protection. The covers are mounted on a U-shaped base plate, which is suitable for screwing

on to a bed (drill holes are present ex works). The side panels can be easily detached and allow easy access to the fan. All the noise insulating covers are designed for fitting to fans with free intake from the atmosphere.



Disc sound absorbers

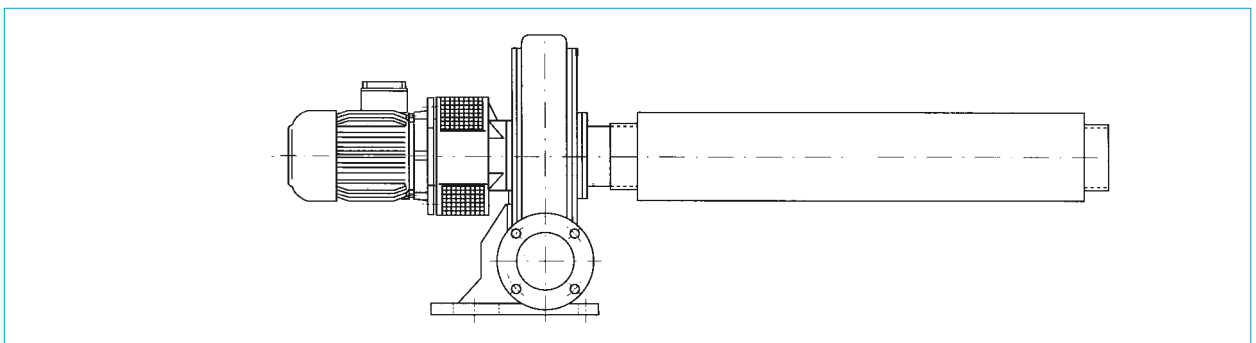
Are manufactured exclusively from sheet steel in two piece execution. Elektror disc sound absorbers are fitted ex works with an integrated intake screen. Foam plastic is used as an insulation material in the large discs.



Tube sound absorbers

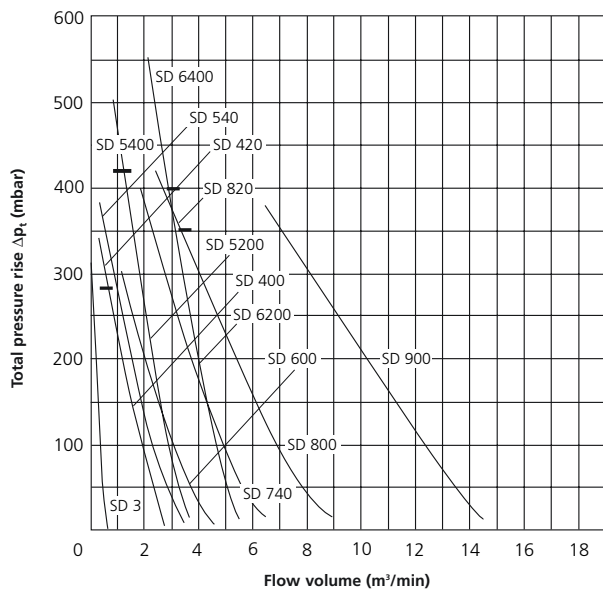
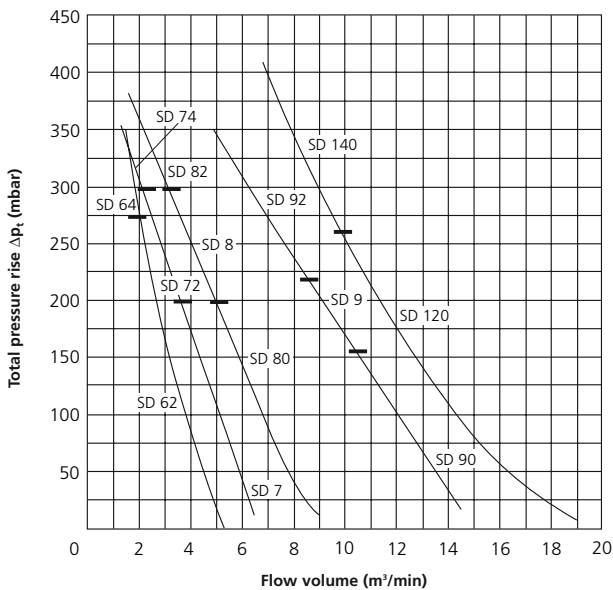
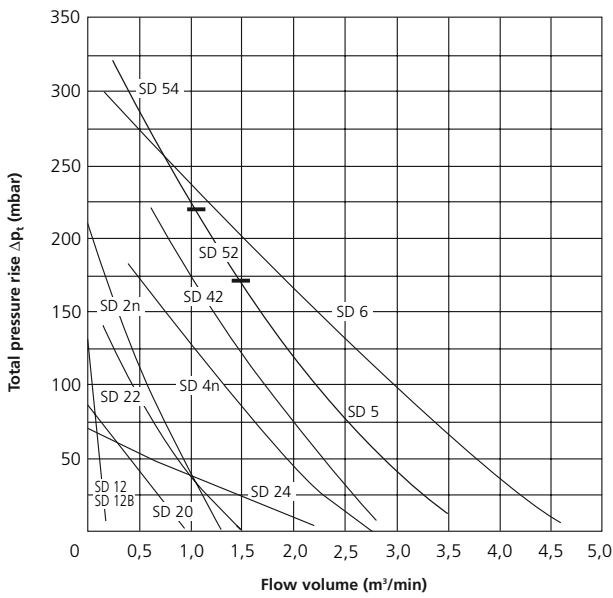
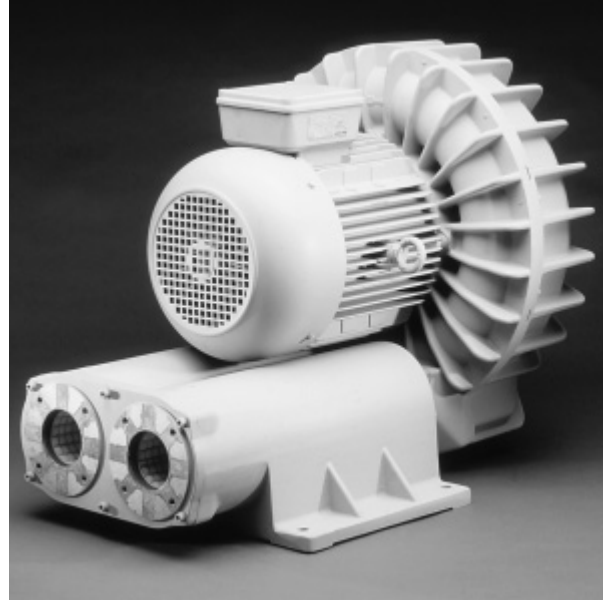
Extremely high-performance sound deadening by means of tubes, which are wound from aluminium foil and have a high tightness as a result of special folding. The inside tube is perforated and insulated with synthetic resin-bonded mineral fibre.

In addition, the tubes are tightly sealed with aluminium caps. This type of sound absorber can only be mounted with an inlet connection without a flange.



SIDE CHANNEL BLOWERS

SD



SD range

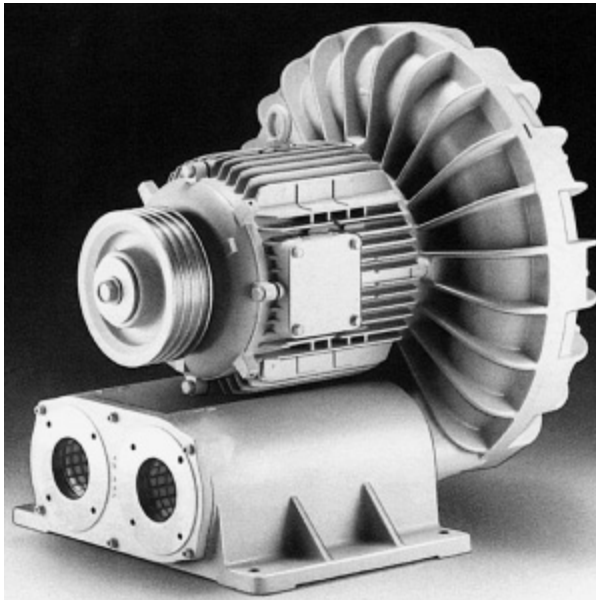
All blower parts made of cast aluminium. Non-contact and oil-free rotating impellers. Silencers on inlet and outlet side with base plate as standard. Maintenance-free and performance-adapted squirrel cage rotor motors to IP 54. Various accessories as connectors, welding and threaded flanges, fine filters, pressure and vacuum relief valves and supplementary silencers are available. Reversing units "Reversierautomat" for quick reversal of the air flow from vacuum to pressure operation, with or without neutral position, without reversing the direction of motor rotation.

SD high Pressure range

Same basic technical design and accessories as SD range.

SD

SIDE CHANNEL BLOWERS



Model range without motor

This type of appliance can be driven from an external source via V-belts. The fan housings made of sturdy cast aluminium and the enclosed impellers are manufactured from aluminium sheet. Fans are available with a clockwise or anti-clockwise rotation. A variety of accessories is also available. Special fans for special operating conditions. e.g. increased temperatures of the conveyed medium and ambient temperatures, extended corrosion protection, fan sealing. For more details see SD catalogue.

Applications:

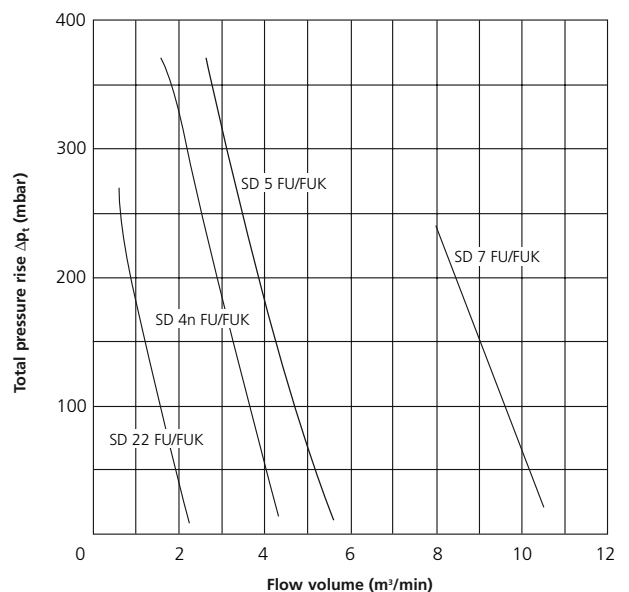
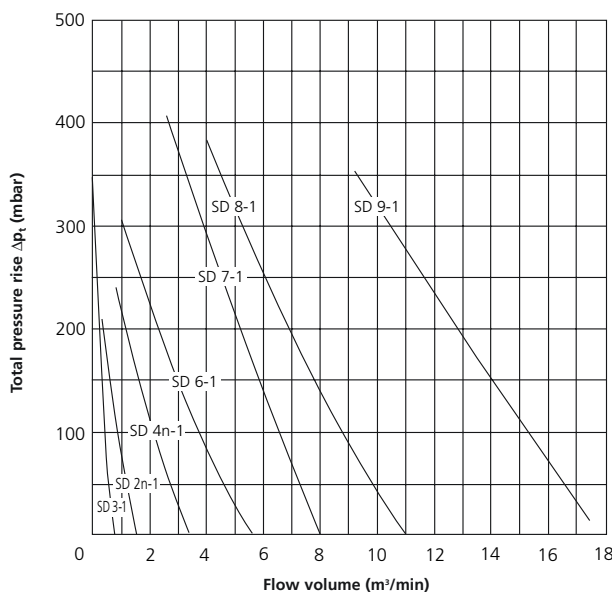
- Conveying of small to medium air volumes at high system resistance
- Air tube conveying
- Vacuum lifting gear
- Pneumatic conveying
- Water treatment
- Welding fume extraction
- Vacuum cleaners



Model range for frequency converter

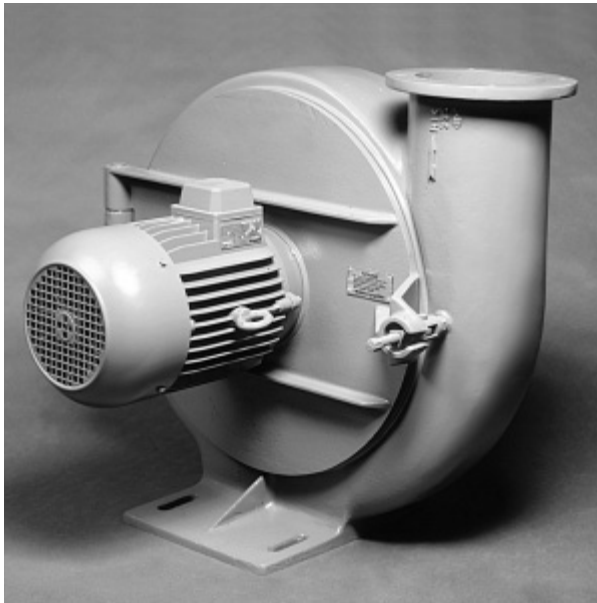
FU/FUK series devices allow the infinitely variable speed regulation of the induction motors used. The speed can be set from 0 to the max. possible speed typical for the device. No derating is required in the entire speed range. In the case of devices in the FUK series, the frequency converter is connected to the motor. The enclosure is IP54. The max. ambient temperature can range up to 60 degrees Celsius.

Devices in the FU series require a separate frequency converter, which is normally accommodated in a switch cabinet.



CONVEYING BLOWERS

FD/RD F



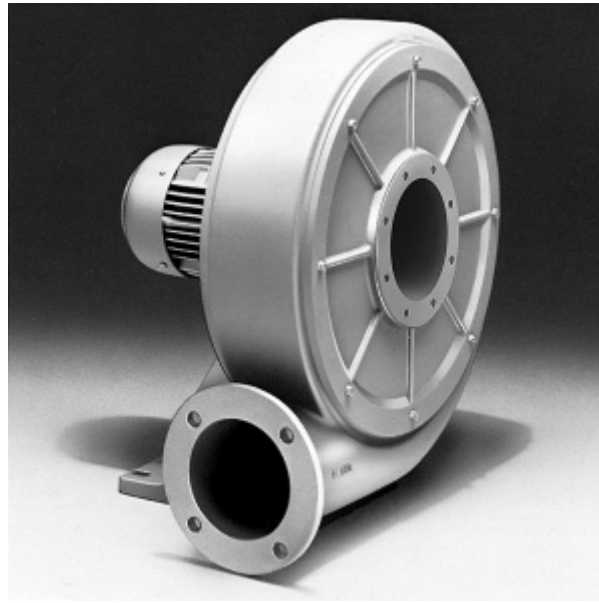
FD range

Blower housings made of abrasion resistant cast iron, hinged housing cover lid for inspection and cleaning, welded sheet steel impellers with radial blades. Maintenance-free squirrel cage rotor motors to IP54. The units can only be supplied in the housing position pictured. Accessories: Various connectors for both inlet and outlet side.

For more details see FD catalogue.

Application:

- Conveying of plastic granules, plastic waste and lightweight bulk materials of all kind provided there is no operational risk.



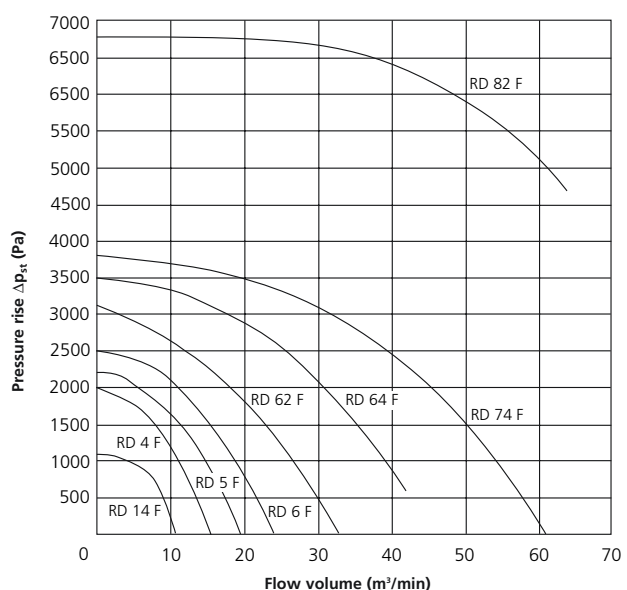
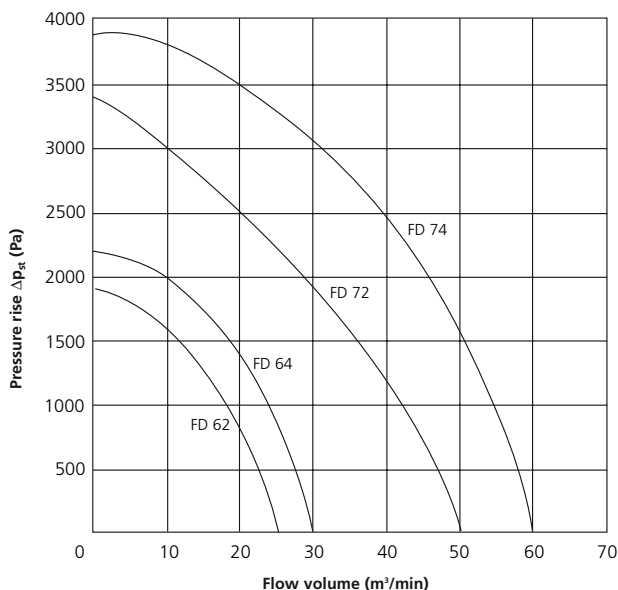
RD F range

The RD F range can be used for conveying of light and non-abrasive bulk. The blower parts are made of aluminium cast, the impellers are made of welded sheet steel. The solid construction of the practically maintenance free medium pressure blowers is the basis for a long lasting service life and low operation cost. Inspection and cleaning may only be carried out at these blowers by unscrewing the housing cover plate.

All drive motors are made to IP 54 enclosure, class F thermal insulation and comply with EN 60034-1 (VDE 530 Part 1). The motor power is oversized in order to have sufficient reserve for the conveying. For more details see FD / RD F catalogue.

Application:

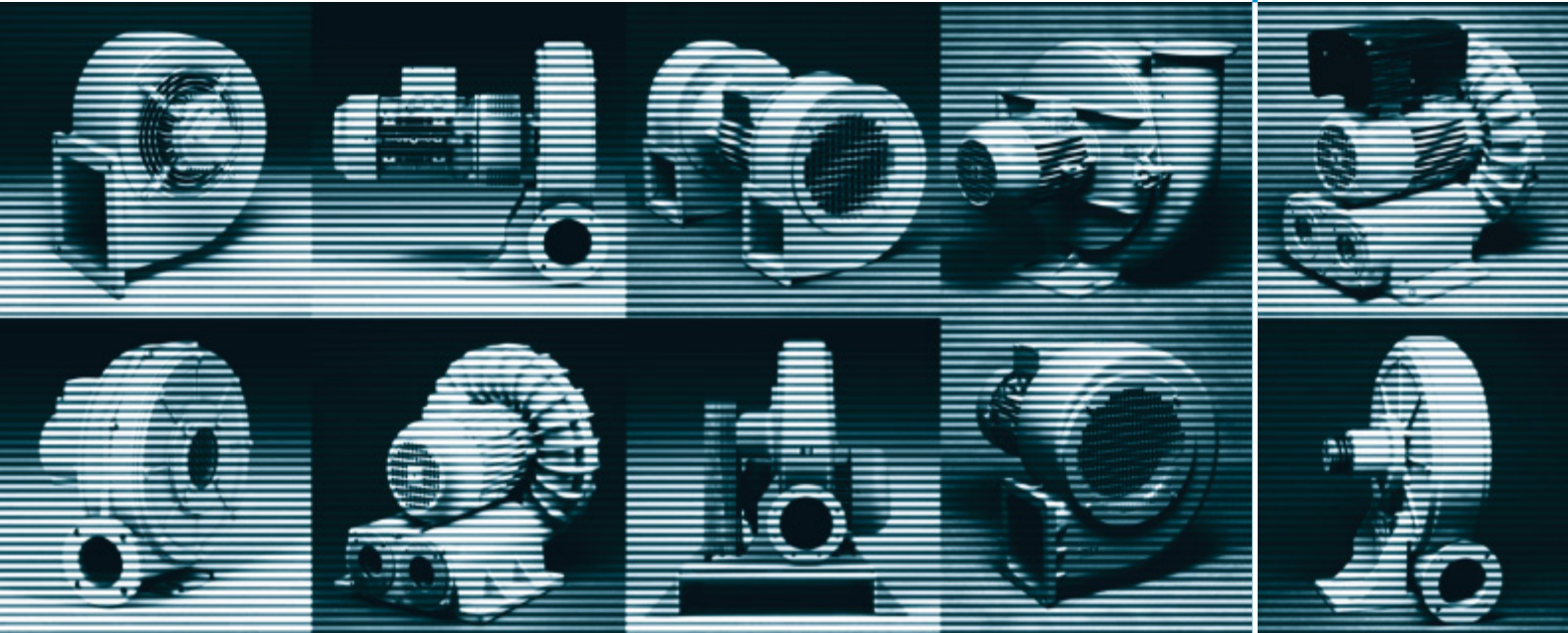
- Conveying of lightweight bulk material of all kind provided there is no operational risk.



Elektor

We make air work.

KARL W. MÜLLER GMBH & CO. KG



Richard-Hirschmann-Straße 12
D-73728 Esslingen/Neckar
Phone +49 (0) 711 319 73 -0
Fax +49 (0) 711 319 73 -135
Internet: www.elektor.de
E-Mail: info@elektor.de